



IMAGESEND
AND SHARPDESK

*The Complete Network
Scanning Solution*

ImageSEND and Sharpdesk™ software: Powerful document distribution solutions to enhance your workflow.

With the ability to scan a document, convert it to digital information, and distribute it to multiple users and locations, Sharp's network scan-enabled Digital IMAGERS™ deliver more than just copy and print features. Network scanning gives you the ability to:

- Distribute documents quickly and easily
- Reduce overnight mail costs
- Store, back-up and retrieve documents with minimal effort
- Utilize contents of stored documents for other purposes
- Reduce need for filing cabinets and associated floor space cost

And, with Sharp's ImageSEND technology and Sharpdesk software, your Digital IMAGER becomes a powerful document management system that can streamline your workflow—saving time and money.



Digital
IMAGER™
Advanced Workgroup System

Effortless Document Distribution with Sharp's ImageSEND



ImageSEND is Sharp's portal to document distribution, and is available on Sharp series Digital IMAGERS. With ImageSEND, you can scan a document and send it instantly to one of seven destinations—with just the touch of a few buttons on the IMAGER's control panel. ImageSEND destinations include:



Send to Desktop allows you to send scanned files directly to your desktop and store them in your favourite file formats. Sharpdesk complements this feature by enabling you to easily manage these files.



Send to E-mail saves time and allows you to send scanned images directly to any e-mail address.



Send to FTP enables you to scan to any File Transfer Protocol (FTP) site or server that allows uploading. Easily store and access files no matter where you are.



Send to Fax enables you to scan and fax right from the control panel.*



Send to i-Fax enables you to send documents worldwide to another T37 Internet fax machine at virtually no cost—and in considerably less time—as compared to a phone line.*



Send to Group allows you to send the same document to multiple e-mail, fax and internet fax destinations—simultaneously.*



Send to USB enables you to scan files directly to a USB device.

Regardless of which model IMAGER you own, you can access the power of network scanning with Send to Desktop, Send to E-mail, and Send to FTP capability. For a complete list of models that support network scanning, please see the back cover.

One-Touch Keys

One-touch keys on the IMAGER's intuitive LCD panel make it easy to select a destination quickly and easily. One-touch keys are easily created right from your desktop, allowing you to personalize the LCD panel for maximum productivity.



Sharp's Network Scanner Tool** utility allows you to create and manage Send to Desktop destinations. Sharp's Export-Import Utility enables you to export and import e-mail addresses—thereby eliminating the need to re-key them to create other destinations. And with the IMAGER Home Page, you can create and manage e-mail, FTP, Fax, i-Fax, and Group destinations—right from your desktop.

*optional Facsimile Expansion Kit required

SHARP

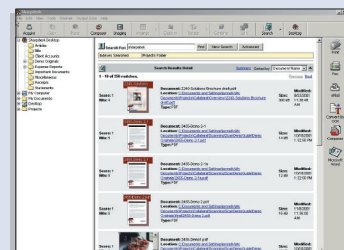
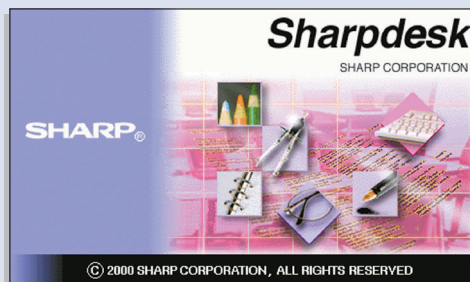
Easily Manage and Integrate Scanned Documents with Sharpdesk™

Sharpdesk™ is a powerful, flexible, and intuitive desktop document management application that integrates your business documents regardless of the format. Scan paper documents and images directly to Sharpdesk from your scan-enabled Digital IMAGER, or drag and drop existing files on your PC into Sharpdesk. Use it to organize, annotate, edit, combine and retrieve your files before you print, e-mail, fax or archive them.

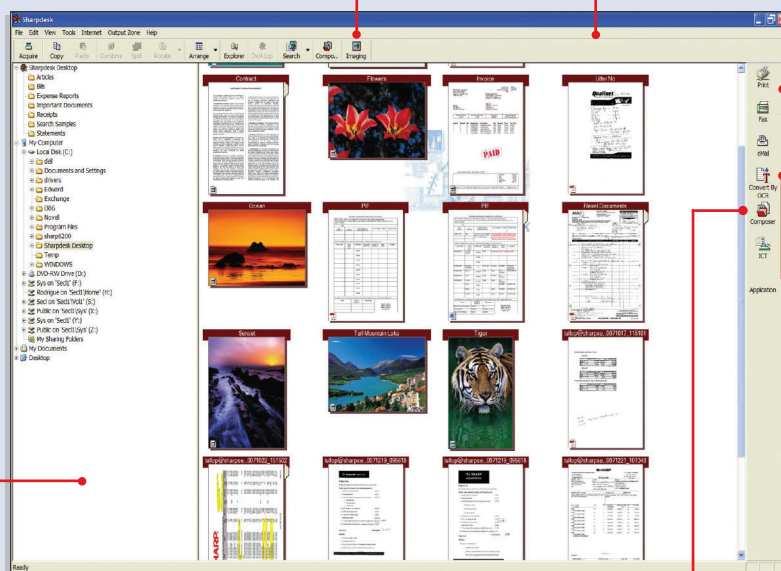
Sharpdesk's Network Scanner Tool enables you to receive scan jobs from your networked IMAGER—without having to send them through your file or mail server. By simply selecting a Send to Desktop One-Touch Key, your hard copy will be automatically scanned, sent, and stored in your PC. With Sharpdesk, you get the tools you need to give your workflow unprecedented power, speed and efficiency.



Image Editor enables you to view and edit image files with just a few key clicks. With a variety of editing functions, it's easy to remove marks from a photograph, straighten page orientation, adjust brightness and contrast, and add text or other comments directly to your scanned document.



Search enables you to quickly locate and retrieve any file on your PC. Sharpdesk's built-in search feature will automatically index your selected files, not just the scanned documents. This makes the search process quick and easy, with the results presented in a friendly format.



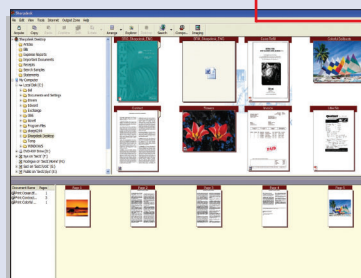
The Sharpdesk Desktop is familiar and easy to use. Scanned documents appear in the Sharpdesk window as thumbnails for easy browsing. Sharpdesk recognizes over 200 types of files including TIFF, JPEG, BMP and common office suite formats.

Output your scanned document by dragging it to the desired icon in the Output Zone. You can archive, print, e-mail, or fax the file; or open the file in your favourite software.

OCR (Optical Character Recognition) software will convert your text document into a digital file that can be edited with most word processing programs. OCR saves time by eliminating the time-intensive process of key-stroking of documents. Convert single or multi-column documents, and ignore or make notations of picture placements in the converted document.

Sharpdesk 3.2 Key Features

- **Receive:** Automatically receive, open and save scans directly from your Sharp Digital IMAGER or any TWAIN Compliant Scanner
- **Manage:** Store, organize and manage documents of any size or type—right from your PC desktop
- **Search:** Find and retrieve scanned documents or any electronic file quickly and easily with the built-in search engine
- **Output:** Drag and drop files and scanned documents to printers, fax machines, or e-mail services available to your PC
- **View:** View files in native formats as thumbnail images in more than 200 file types including TIFF, JPEG, BMP and common Office Suite formats
- **Compose:** Combine files of different types in a single document for easy distribution with Composer



Composer enables you to combine files of different types, such as Word files, Excel files and digital camera images into a single production ready document. Thumbnails make it easy to reorder pages or add a cover page. You can even overlay headers and footers for a consistent look throughout the document.

- **OCR:** Convert hard-copy documents into editable files with built-in OCR capability
- **Compress:** Compress PDF files to improve communications bandwidth or to increase storage capacity
- **Image Editing:** Edit images and photographs with a range of drawing tools and touch-up filters with Image Editor

Enhance your workflow and maximize productivity with Sharp's complete network scanning solution.

Scanning Specifications

Sharp Digital IMAGER Mono	ARM257/317	MXM350U/350N/450U/450N	MXM550U/550N/620U/620N/700U/700N	MXM850/950/1100
Scanning Option Model	MXNSX11	MXNSX12	MXNSX13	MXNSX1 Standard
Speed				
Print : (pages per minute)	25/31 ppm	35/45 ppm	55/62/70 ppm	85/95/110 ppm
Scan : (images per minute)	25/31 ipm	45 ipm	65 ipm	MXM 850 - 85 ipm (Dual Scan) MXM 950/1100 - 120 ipm (Dual Scan)
Resolution				
Scan :	600 dpi	600 dpi	600 dpi	600 dpi
Output :	200/300/600 dpi	100/200/300/400/600 dpi	100/200/300/400/600 dpi	200/300/400/600 dpi
File Format				
File type :	PDF/TIFF	PDF/TIFF/TIFF-F	PDF/TIFF/TIFF-F	Monochrome: TIFF, PDF, Colour: Encrypted PDF, TIFF, JPEG, PDF. Monochrome: Uncompressed, G3 (MH), G4 (MR/MMR), Colour/Greyscale (option): High/ Middle/ Low
Compression mode:	MH/MR/MMR/JBIG	MH/MR/MMR/JBIG	MH/MR/MMR/JBIG	
Maximum Original Size	"11 x 17"	"11 x 17"	"11 x 17"	"11 x 17"
Duplex Scan	Yes	Optional ARDU3/ ARDU4	Yes	Yes
Page Order	1 → N	1 → N	1 → N	1 → N
Multi-Page Scan File Split	Single/Multiple	Single/Multiple	Single/Multiple	Single/Multiple
Scan Destinations	E-mail/Desktop/FTP/URL/Fax*	Email, Desktop, FTP, Folder (SMB), Fax*, Internet fax*	Email, Desktop, FTP, Folder (SMB), Fax*, Internet fax*	E-mail, Desktop, FTP, SMB (network folder), USB, URL, G3 fax*, Internet fax**
Management System	IMAGER Home Page	IMAGER Home Page	IMAGER Home Page	IMAGER Home Page
Supported Mail System	SMTP Compliant Systems	SMTP Compliant Systems	SMTP Compliant Systems	SMTP Compliant Systems
One Touch Keys (Max)	200	Max. 999, including E-mail, FTP, Desktop Folder, Internet-Fax, and Group destinations. Total of 100 Send to FTP and Desktop destinations can be stored	Max. 999, including E-mail, FTP, Desktop Folder, Internet-Fax, and Group destinations. Total of 100 Send to FTP and Desktop destinations can be stored.	999
Network Connectivity	10/100BaseT	10/100BaseT, Opt. on U models	10/100BaseT, Opt. on U models	10/100BaseT
Network Protocol	TCP/IP, IPV4/IPV6, IPX/SPX	IPX/SPX, TCP/IP(IPv4, IPv6, IPsec (LPD), Ether Talk, Net BEUI	IPX/SPX, TCP/IP(IPv4, IPv6, IPsec (LPD), Ether Talk, Net BEUI	TCP/IP, IPv6, IPsec, SSL, SMTP, FTP, SMB, IPX/SPX, AppleTalk®
Sharpdesk Licenses	10 User Licenses**	10 User Licenses**	10 User Licenses**	10 User Licenses**

Sharp Digital IMAGER Colour	MX2300N/2700N	MX3501N/4501N	MX5500N/6201N/7001N	
Speed				
Print : (pages per minute)	MX2300N: 23 ppm B&W/23 ppm colour MX2700N: 27 ppm B&W/27 ppm colour	MX3501N: 35 ppm B&W / 35 ppm colour MX4501N: 45 ppm B&W / 35 ppm colour	MX5500N: 55 PPM B/W & 41 PPM Colour MX6201N: 62 PPM B/W & 50 PPM Colour MX7001N: 70 PPM B/W & 50 PPM Colour	
Scan : (images per minute)	48 ipm B/W/35 ipm colour	48 ipm B/W/35 ipm colour	65 ipm B/W/35 colour	
Resolution				
Scan :	600 dpi	600 dpi	600 dpi	
Output :	100/200/300/400/600 dpi	100/200/300/400/600 dpi	100/200/300/400/600 dpi	
File Format				
File type:	Monochrome: TIFF, PDF, Encrypted PDF Colour/Greyscale: Colour TIFF, JPG, PDF, Encrypted PDF	Monochrome: TIFF, PDF, Encrypted PDF Colour/Greyscale: TIFF, JPG, PDF, Encrypted PDF Internet Fax (options): TIFF-FX, TIFF-F, TIFF-S	Monochrome: TIFF, PDF, Encrypted PDF Colour/Greyscale: TIFF, JPG, PDF, Encrypted PDF Internet Fax (options): TIFF-FX, TIFF-F, TIFF-S Mono: Uncompressed, G3 (MH), G4(MR/MMR)	1 Requires ARP27 Print Controller, Requires 128 MB memory upgrade on ARP27 2 U model's requires MXNBX2 : Network expansion kit/ MXNBX3 : Network expansion kit with 40 GB HD and Document Filing Systems 3 U model's requires MXNBX1 : Network expansion kit 4 Requires optional Facsimile Expansion Kit, ARFX7 5 Requires optional Facsimile Expansion Kit, ARFX12 6 Requires optional Facsimile Expansion Kit, ARFX8 7 Requires optional Facsimile Expansion Kit, MXFX1 8 Requires optional Internet Facsimile Expansion Kit, MXFWX1 9 Requires optional Internet Facsimile Expansion Kit, MXFWX1 10 Requires optional Internet Facsimile Expansion Kit, MXFWX1 11 Additional Licenses : MXUSX1 Sharpdesk 1 user license, MXUSX5 Sharpdesk 5 user license, MXUS10 Sharpdesk 10 user license, MXUS50 Sharpdesk 50 user license, MXUSAO Sharpdesk 100 user license, Application Integration Module: MXAMX1 include's one Sharpdesk license, Sharpdesk 3.2 supports the new MX series products as well as existing Sharpdesk 3.1 products. 12 Requires optional Internet Fax kit, MXFWX1 13 Requires optional Facsimile Expansion kit, MXFX1
Compression mode:	Internet Fax (options): TIFF-FX (TIFF-F/TIFF-S) Monochrome Scanning: Uncompressed, G3 (MH), G4 (MR/MMR) Colour/Greyscale: JPEG (high, middle, low) Internet Fax mode: MH/MMR	Mono: Uncompressed, G3 (MH), G4(MR/MMR) Colour/Greyscale: JPEG (high, middle, low) Internet Fax: MH/MMR (option)	Colour/Greyscale: JPEG (high, middle, low) Internet Fax: MH/MMR (option)	
Maximum Original Size	"11 x 17"	"11 x 17"	"11 x 17"	
Duplex Scan	Yes	Yes	Yes	
Page Order	1 → N	1 → N	1 → N	
Multi-Page Scan File Split	Single/Multiple	Single/Multiple	Single/Multiple	
Scan Destinations	E-mail, Desktop, FTP, Folder (SMB), USB, Internet fax (option)**; Super G3 fax (option)**	Email, Desktop, FTP, Folder (SMB), USB memory, Internet fax (option)**; Super G3 fax (option)**	E-mail, Desktop, FTP, Folder (SMB), USB memory, Internet fax (option)**; Super G3 fax (option)**	
Management System	IMAGER Home Page	IMAGER Home Page	IMAGER Home Page	
Supported Mail System	SMTP Compliant Systems	SMTP Compliant Systems	SMTP Compliant Systems	
One Touch Keys (Max)	Up to 999 destinations (Combined with scan destinations)	Up to 999 destinations (Combined with scan destinations)	Up to 999 destinations (Combined with scan destinations)	
Network Connectivity	10/100BaseT	10/100BaseT	10/100BaseT	
Network Protocol	TCP/IP, IPX/SPX, EtherTalk	TCP/IP, IPX/SPX, EtherTalk	TCP/IP, IPv6, IPsec, SSL, SMTP, FTP, SMB, IPX/SPX, and AppleTalk®	
Sharpdesk Licenses	1 User License**	1 User License**	1 User License**	

Sharpdesk 3.2 Specifications

Document/Image Input Methods	Sharp Digital IMAGERS with Network Scanning enabled: Any TWAIN 32-compliant Scanner
Network Scanner Tool**	Enables automatic and direct transfer of scanned image/document from Sharp Digital IMAGER to workstations
Viewing and Document Management	Folder: Tree hierarchy (Windows® Explorer-like) Document: Thumbnail with preview file format icons (BMP, TIFF, JPEG, DOC, XLS, PPT, etc.; over 200 file formats supported)
Search	Full text and file property search; Supports up to 35 file formats; Create up to 20 unique indexes; Automatic index updates
Page (section) Operations	Add, delete, paste, move, copy, de-speckle, crop, straighten page, and undo for image files
Annotation	Copy (cut) and paste portion of page, save text, line art, rectangle, hyperlink, initials, notes, highlighting, freehand drawing, stamp, display/hide annotations for viewing and printing image files
Supported Languages	English (US and British), French, Italian, German, Spanish, Swedish, Dutch

Output Methods	E-mail attachment (in original format, or SDF* file from Sharpdesk Composer), OCR, format conversion (Sharpdesk Imaging: TIFF, JPEG, BMP, AWD, etc.)
----------------	--

Minimum System Requirements

CPU	At least 300 MHz Pentium or equivalent (500 MHz or better recommended)
Main Memory	Windows 98/ME: Minimum 64 MB (128 MB recommended) Windows NT/2000: Minimum 64 MB (128 MB recommended) Windows XP: Minimum 128 MB
Operating System	Vista Windows XP Professional/Home Edition Windows 98 or Millennium Windows NT® 4.0 (SP6) or 2000 (English version)*** Internet Explorer 5, 5 or later Installed TCP/IP network
Hard Disk Free Space	110 MB application footprint 500 MB free hard drive space recommended
Display	800 x 600 or higher resolution, at least 256 colours (True Colour recommended)

Design and specifications subject to change without notice.
Sharp® is a registered trademark of Sharp Corporation. All other trademarks, trade names, service marks, and logos referenced herein belong to their respective companies.