

Samsung Multifunction

SMART MultiXpress

X4300LX | X4250LX | X4220RX



The New Way of Printing, Innovated for Smarter Business



**SMARTIFY
YOUR BUSINESS.**
PRINTING INNOVATION.

SAMSUNG
BUSINESS

GO BEYOND YOUR WORK CAPABILITIES WITH SMART PRINT INNOVATION

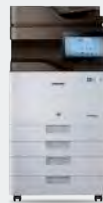
Take business performance to a new level with smart printing

To keep up with the fast-paced business world, businesses today are embracing bring-your-own-device (BYOD) policies. This is leading to more efficient, seamless operations and highly productive, always-on employees using smart intuitive technology in the form of smartphones and cloud computing.

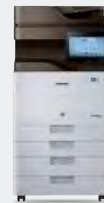
Businesses now want to extend that smart technology to all devices to gain the same level of intuitiveness and flexibility. A printer is no exception. From scanning to printing, printers are expected to have the same smart functionalities as cutting-edge mobile devices. Businesses seek smart printing solutions that can be easily managed while still delivering powerful performance at reduced costs.

Samsung's new A3 color multifunction printer (MFP) SMART MultiXpress X4300LX / X4250 LX / X4220RX provides smart usability that allows users to work faster and more efficiently using intuitive, easy-to-use controls. And with high-performance and cost-efficient features, these printers can meet the print demands of businesses that depend on heavy volume printing, while lowering total cost of ownership (TCO).

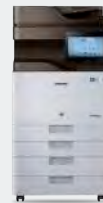
Samsung SMART MultiXpress:



X4300LX
(30 ppm)



X4250LX
(25 ppm)



X4220RX
(22 ppm)



**SMARTIFY
YOUR BUSINESS.**
PRINTING INNOVATION.

WORK SMARTER USING THE LATEST IN INTELLIGENT TOUCH FEATURES

Experience SMART printing, just like using a tablet



Samsung SMART UX Center
powered by Android™



Convenient Applications & Widgets

SMART Touch

Touch to print, just like on a tablet

The SMART MultiXpress X4300LX / X4250 LX / X4220RX provides innovative usability through Samsung SMART UX Center as the very first Smart Android printing UX. Samsung SMART UX Center is a printing UX based on the Android OS and the first of its kind in the printing industry.

This user-friendly UX provides intuitiveness, usability and extendibility at the same time, which ensures perfect compatibility with various Android-based smart devices.

Enjoy preloaded applications and widgets

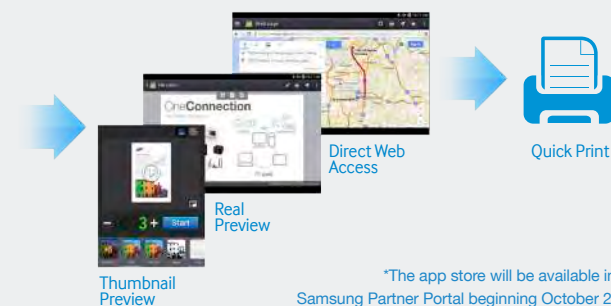
Printing applications are preloaded, including Copy, Scan/Send, Box, Job Status, Counter, Settings, Build Job, Address Book and Help, which provides users with more convenient usability. Plus, there are custom widgets for creating instant, one-tap access to frequently used functions.

SMART Use

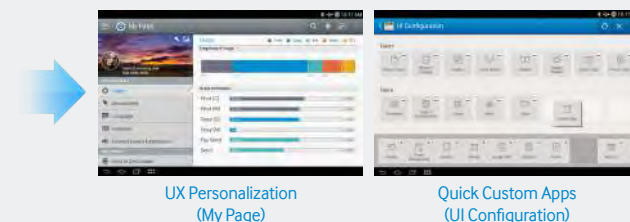
Expand use with independent functions and extensibility

The interface also provides the Real Preview function from the preloaded applications, such as Copy, Send and Box. You can further extend usability with direct web access through the web browser to quickly print various web content, such as maps, pictures, emails and more without a PC.

Plus, you can access more useful features and solutions by downloading them through the Samsung printing app store.*



*The app store will be available in the Samsung Partner Portal beginning October 2014.



UX Personalization (My Page)

Quick Custom Apps (UI Configuration)

SMART Manage

Personalize the UX through My Page

Enhance the UX by arranging and managing the environment by user with My Page. Simply customize the My Page settings and Quick Menu for each user and you can keep track of an individual's usage, control accessibility and more.

Create custom apps and UIs in a snap

Administrators can create quick custom apps directly on the devices. Instantly respond to different customers with one click by customizing the UI configuration in a maximum of a minute.

SAMSUNG
BUSINESS

PROCESS PRINTS AND SCANS AT SUPER-FAST SPEEDS WITHOUT SACRIFICING QUALITY

Boost productivity with ultra-fast performance

Work fast, wait less

Scan at ultra-high rates

SMART MultiXpress X4300LX / X4250 LX / X4220RX printers are equipped with Dual-Scan ADF¹ technology, enabling them to deliver ultra-high, best-in-class scanning speeds. These workhorse MFPs can scan up to 80 single-sided images per minute (ipm)², up to 100 double-sided ipm³ for color and up to 120⁴ double-sided ipm for mono.

Faster print processing with zero fuss

SMART MultiXpress X4300LX / X4250LX / X4220RX prints at fast speeds of up to 30 pages per minute (ppm)⁵. A 1 GHz dual-core CPU provides the power and capacity to accomplish print and copy jobs of any size or complexity swiftly. Businesses can work smoothly and operate at a much more efficient level with high-performance speed printing.



Color Trapping



Edge Enhancement



Composite Color Reduction



De-screening

Get sharper-quality print output

Samsung's unique Rendering Engine for Clean Page (ReCP) technology delivers professional-quality output with sharp text and clean images, ensuring a perfect-looking printout every time. The innovative technology automatically sharpens the focus of both graphics and text. And with a superior resolution of 1,200 x 1,200 effective dpi, your scans, printout and company will always look professional.

¹ Dual-Scan ADF is available on the X4250LX and X4300LX models only.

² 80 single-sided ipm is available on the X4250LX and X4300LX models only.

45 single-sided ipm is available on the X4220RX model only.

³ 100 double-sided ipm for color is available on the X4250LX and X4300LX models only.

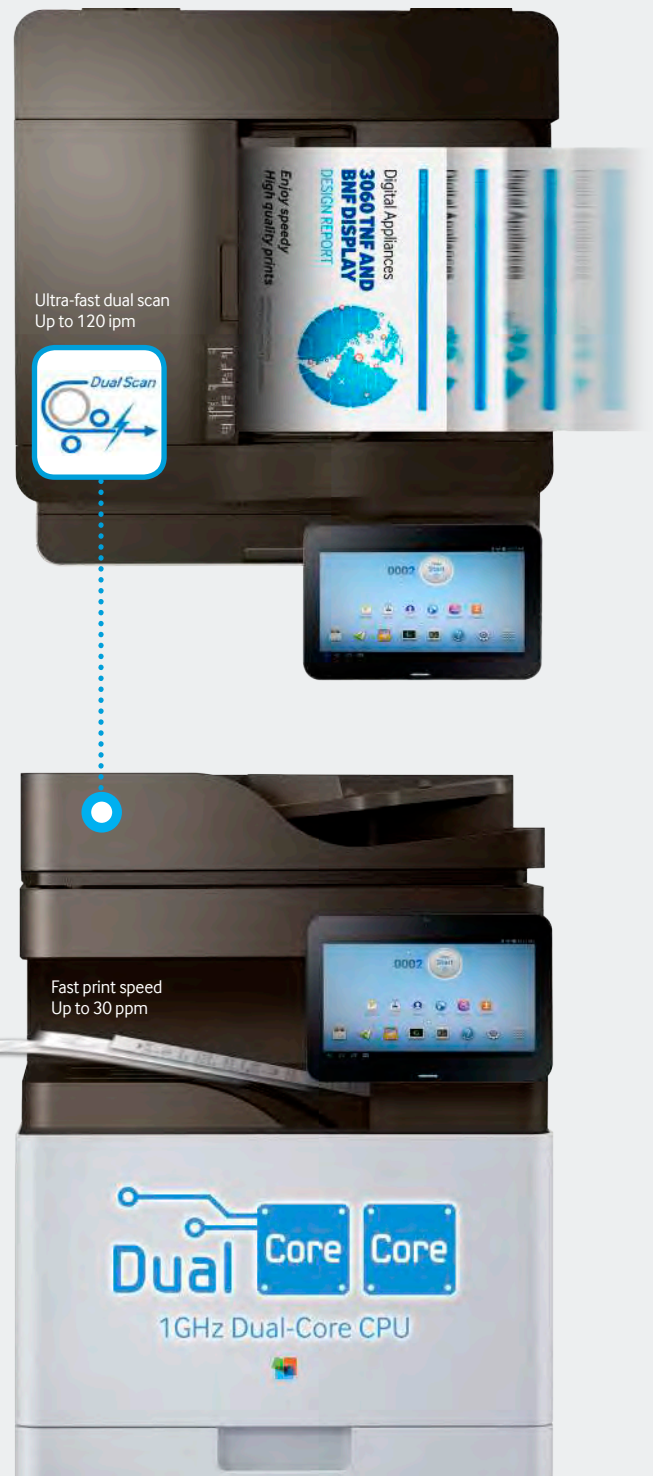
18 double-sided ipm is available on the X4220RX model only.

⁴ 120 double-sided ipm for mono is available on the X4250LX and X4300LX models only.

⁵ 30 ppm is available on the X4300LX model only.

25 ppm is available on the X4250LX model only.

22 ppm is available on the X4220RX model only.



MANAGE OPERATIONAL EXPENSES THROUGH COST-EFFICIENT ATTRIBUTES

Lower your TCO with cost-efficient solutions and supplies

Do more jobs, spend less

Create the printing environment that suits your needs with customized, cost-efficient solutions

Samsung's Business Core™ Printing Solutions (BCPS) work as efficiently as you do by providing cost-effective and secure print operation, increasing productivity and simplifying management. These solutions require no dedicated server and IT resources and reduce unnecessary printing and supply use, lowering total cost of ownership (TCO). These essential printing solutions include:



Business Core Printing Solutions	Benefits
SecuThru™ Lite 2 <small>Business Core™ Printing Solutions</small>	Enhances document security and reduces costs with user authentication
Secure Login Manager <small>Business Core™ Printing Solutions</small>	Guards valuable data and devices from unauthorized use
SmarThru™ Workflow Lite <small>Business Core™ Printing Solutions</small>	Increases productivity with an automated workflow solution
Cloud Connector <small>Business Core™ Printing Solutions</small>	Scans to and prints from the cloud with easy, secure access
Usage Tracker <small>Business Core™ Printing Solutions</small>	Controls printing expenses by easily tracking device usage per user
XOA <small>Xerox Open Architecture</small>	
For further customization, numerous certified partner solutions are available through the Samsung XOA platform.	

The Samsung Wireless & NFC printing option* can be added to support various mobile printing solutions with just a tap, including:

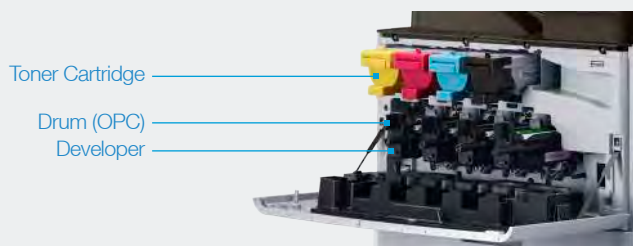
- **User authentication:** Enable authorized users to tap and print to a Samsung MFP from their mobile devices.
- **Secure printing:** Authorize secure release of documents held in the printer's memory with the BCPS and just a tap on your mobile device.
- **Easy wireless setup:** Configure wireless (IP) print setup from your mobile device without complicated activation steps with just a tap.
- **Device cloning:** Clone standardized functions of an MFP with just a tap on your mobile device.

*The Wireless & NFC option will be available beginning October 2014.



Save resources with low total cost of ownership (TCO) printing

Businesses can handle heavy printing volumes while reducing labor costs with the X4300 Series' ultra-high-yield toner cartridges and drums. Flexible options range from toners that yield 20,000 standard pages for color to 23,000 for black and white, while drums yield 100,000 standard pages. These long-life consumables ensure businesses get the most out of their resources, resulting in lower TCO.



SAMSUNG
BUSINESS

CUSTOMIZE YOUR MFP WITH A FLEXIBLE PRINT SOLUTION

Select from a range of options to create a tailor-made MFP

Configurable devices for optimized performance

Businesses of varying sizes and industries can meet their specific needs with the SMART MultiXpress X4300LX / X4250 LX / X4220RX's unique configuration capabilities. Factory-provided modules serve as a basis upon which differing components are chosen along with a wide array of optional components.

Configurations & Options



Samsung Multifunction SMART MultiXpress

X4300LX | X4250LX | X4220RX

Technical details made to support your business

General Specifications

Speed	- X4300LX: 30/30 ppm - X4250LX: 25/25 ppm - X4220RX: 22/22 ppm
Processor	1 GHz Dual Core
Memory	2 GB DDR3 Memory
Operational Panel Interface	10.1" Color Touch-Panel LCD (960 x 600) USB 2.0, Ethernet 10/100/1000 BaseTX, IEEE802.11 b/g/n (Optional)
Duty Cycle. Monthly	- X4300LX: 120,000 pages - X4250LX: 110,000 pages - X4220RX: 100,000 pages
Dimensions (W x D x H)	566 x 610 x 879 mm (22.3" x 24" x 34.6")
Weight	X4300LX, X4250LX: 80 kg (inc. DSDFD), X4220RX: 79 kg (inc. RADF)
Network Protocols	IP Management (DHCP, BOOTP, AutoIP, SetIP, Static) / Discovery Protocol (SLP, UPnP, Bonjour, DNS, WINS) / Printing Protocol (TCP/IP, LPR, IPP, WSD) / Management Protocol (SNMPv1.2, SNMP3, SMTP, Talnet) / Scan Protocol (SMTP, FTP, SMB, WSD) / Security Protocol (SMB, Kerberos, LDAP, IPsec, EAP)
Network Security	SSL / TLS, IP Sec, SNMPv3, Protocol & Port Management, IPv6, IP/MAC Filtering, IEEE 802.1x support (Optional)
OS Compatibility	- Windows: XP (32 / 64 bit) / 2003 Server (32 / 64 bit) / Vista (32 / 64 bit) / 2008 Server (32 / 64 bit) / 7 (32 / 64 bit) / 2008 Server R2 / Windows 8 (32 / 64 bit) / Windows 8.1 (32 / 64 bit) / Windows Server 2012 (32 / 64 bit) / Windows Server 2012 R2 - Mac OS 10.5 - 10.9 - Linux: Red Hat Enterprise Linux 5 / 6, Fedora 11 / 12 / 13 / 14 / 15 / 16 / 17 / 18 / 19, openSUSE 11.0 / 11.1 / 11.2 / 11.3 / 11.4 / 12.1 / 12.2 / 12.3, Ubuntu 10.04 / 10.10 / 11.04 / 11.10 / 12.04 / 12.10 / 13.04, SUSE Linux Enterprise Desktop 10 / 11, Debian 5.0 / 6.0 / 7.0 / 7.1, Mint 13 / 14 / 15 - UNIX: Sun Solaris 9 / 10 / 11 (x86, SPARC), HP-UX 11.0 / 11i v1 / 11i v2 / 11i v3 (PA-RISC, Itanium), IBM AIX 5.1 / 5.2 / 5.3 / 5.4 / 6.1 / 7.1 (PowerPC)
Power Consumption	1.5 W (Sleep) / 200 Wh (Ready) / 1.2 kWh (Max)

Paper Handling

Input Capacity & Types	2,180 Sheets @ 80 g/m ² (1,140-Sheet Standard + 1,040-Sheet Optional DCF)
Media Size	- MP Tray: 98 x 148 mm - 297 x 432 mm (3.8" x 5.8" - 11.7" x 17") - Tray1: 148.5 x 210 mm - 297 x 354 mm (5.8" x 8.2" - 11.7" x 14") - Tray2: 148.5 x 210 mm - 297 x 432 mm (5.8" x 8.2" - 11.7" x 17")
Media Type	Plain / Thin / Bond / Hole Punched / Pre-Printed / Recycled / Thin CardStock / Letterhead / Thick / Cotton / Colored / Archive / Thin Glossy / Heavy weight / Extra heavy weight
Media Weight	Tray 1&2: 60 - 220 g/m ² (16 - 47 lb) MP Tray: 60 - 175 g/m ² (16 - 59 lb)
ADF Document Size	Ledger / Letter / Legal / Oficio / Folio / A3 / A4 / JIS B5 / ISO B5 / Executive / A5 / Statement / Custom
ADF Capacity	100 Sheets @ 80 g/m ²

Copy Specification

First Copy Out Time	- X4300LX: 5.9 / 7.6 sec - X4250LX: 6.6 / 8.2 sec - X4220RX: 7.2 / 9 sec
Resolution	Up to 600 x 600 dpi
Zoom Rate	25% - 400%
Multi Copy	Up to 9,999

Copy Features

ID Copy / N-up / Booklet / Image Repeat / Auto Fit / Book Copy / Poster Copy / Watermark / Image Overlay / Stamp / Covers / Job Build / Preview

Print Specification

Resolution	Up to 1,200 x 1,200 dpi
Emulation	PCL5e / PCL6 / PostScript 3 / PDF
Direct Print Support	PRN / PDF / TIFF / JPEG / XPS

Scanner Specification

Speed	X4300LX, X4250LX: Simplex 80/80 ipm (Mono / Color), Duplex 120/100 ipm (Mono / Color) X4220RX: Simplex 45/45 ipm (Mono/Color)
Compatibility	Network TWIN, Network SANE
Scan File Formats	PDF / Compact PDF / Searchable PDF / JPEG / XPS / TIFF-S / TIFF-M / TIFF
Resolution	600 x 600 dpi (Optical), 4,800 x 4,800 dpi (Enhanced)
Scan to Destination	Email / FTP / SMB / HDD / USB / WSD / PC

Fax Specification (Optional)

Modem Speed	33.6 kbps - 2,400 bps with Automatic Speed Selection
Compatibility	ITU-T G3, Super G3
Resolution	203 x 98 dpi (Std), 203 x 196 dpi (Fin), 300 x 300 dpi (Super. Fine), 600 x 600 dpi (Ultra. Fine)
Fax Functions	Auto Redial, Caller ID, Secure Reception, Fax forwarding to Fax / Email / SMB / FTP / Box, Job Build, Preview, Dual line (Opt), etc.
Max. Line	2nd lines

Options

Double Cassette Feeder (SL-PFP502D)

Input Capacity	1,040 Sheets (520 Sheets x 2)
Media Size	148 x 210 mm - 297 x 432 mm (3.87" x 8.2" - 11.7" x 17")
Media Weight	60 - 220 g/m ² (16 - 59 lb)
Dimensions (W x D x H)	566 x 610 x 265 mm (22.3" x 24" x 10")
Weight	20 kg (44 lb)

Inner Finisher (SL-FIN501L)

Output Capacity	550 Sheets (Main 500, Top 50) @ 80 gsm
Media Size	Main: 98 - 320 mm x 140 - 457.2 mm (3.85" x 12.6" - 5.5" x 17.8") Top: 140 - 297 mm x 210 - 432 mm (5.5" x 11.7" - 8.2" x 17")
Media Weight	Main: 52 - 300 g/m ² Top: 52 - 256 g/m ²
Staple Capacity	50 Sheets
Dimensions (W x D x H)	665 x 491 x 220 mm (26.2" x 19.3" x 8.7")
Weight	15 kg (33 lb)

Job Separator (SL-JSP500S)

Media Capacity	125 Sheets
Media Size	148 x 98 mm - 297 x 432 mm (3.87" x 5.8" - 11.7" x 17")
Media Weight	60 - 220 g/m ² (16-59 lb)
Dimensions (W x D x H)	395.3 x 380.5 x 96.6 mm (15.6" x 15" x 3.8")
Weight	1.5 kg (3.3 lb)

Booklet Finisher (SL-FIN701B)

Capacity	65 Sheets Stapling / 2,000 Sheets Stacking
Staple Cartridge	5,000 Staples / Cartridge
Stacking	- Top Tray : 250 Sheets (A4/LT @ 80 gsm) - Finishing Tray : 2,000 Sheets (A4/LT @ 80 gsm)
Output Stacking	Face Down

High-volume Finisher (SL-FIN701H)

Capacity	65 Sheets Stapling / 3,250 Sheets Stacking
Staple Cartridge	5,000 Staples / Cartridge
Stacking	- Top Tray : 250 Sheets (A4/LT @ 80 gsm) - Finishing Tray : 3,000 Sheets (A4/LT @ 80 gsm)
Output Stacking	Face Down

Others

General	Cabinet, Working Table, Multi-purpose Tray
Network	Wireless / NFC Kit, Additional LAN Kit, FDI Kit, Fax Kit, Dual Fax Kit
Punch Kit	Auto change 2/3 or 2/4 hole, Swedish 4

Consumable

Black Toner Cartridge	23,000 pages
Color Toner Cartridge (C/M/Y)	20,000 pages
Black Drum	100,000 pages
Color Drum (C/M/Y)	100,000 pages
	Estimated Toner Yields @ 5% coverage For best performance and yield, we recommend using genuine Samsung parts and consumables.